

Cormate®



Cormate by Hydrodesign. Sulfatveien 10. 1658, Torp. Norway

WWW.CORMATE.CO.UK



UTILITY 23 PRO

The Utility 23 PRO edition has been designed to give the most exhilarating driving experience from the latest generation of Mercury outboards. She's a family focussed high performance, multi use boat, with exceptionally low fuel consumption. Featuring recessed bow sundeck, cabin to sleep two, marine wc, fridge, shower, large aft dining area that converts to sumptuous aft sundeck, with large ski locker under. Standard with digital racing throttles, high performance steering and integrated nav, engine & entertainment system.



Length: 715 cm
Width: 235 cm
Draught: from 60 cm
Weight from: 750 kg (from)
Fuel: 150l
Top speed: 40-46 knots
Super to Race edition 60 - 80 knots
Seats: 8
Berths: 2





UTILITY 23 SUPERMARINE

Utility 23 Supermarine. Powered by sterndrive V6 and V8 Mercruiser engines (250 and 350 hp), it is lightning fast with a top speed of up to 62 knots. The aim has been to create a light but very strong boat with ride comfort, quality, finish and details that belong at the top level of the premium class. This is true Cormate quality in every detail.



Length: 715 cm
Width: 235 cm
Draught: from 60 cm
Weight from: 750 kg (from)
Fuel: 150l
Top speed: 40-46 knots
Super to Race edition 60 - 80 knots
Seats: 8
Berths: 2



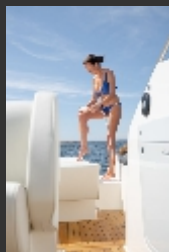


T28 SUPERMARINE

T-28 combines the usability of a center console deck arrangement with the comfort of a day cruiser. The open and user-friendly lay out gives easy access to all of the boats outside area. She has a sheltered sunbathing area in the bow and an elegant dining area aft, convertible to sundeck. Cabin sleeps two with separate heads plus sink, integrated fridge & stove.



Length 846 cm
Width 255 cm
Depth (approx.) 75 cm
Weight from 1900 kg
Berths 2 & Seats 9
Dining 2+3 seats
Fuel tank 250 l
Deadrise 25 degrees
Speed 49-56 knots



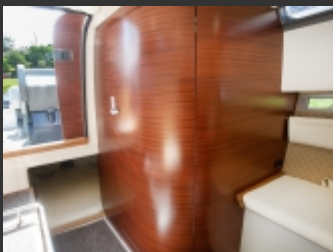


CHASE 32

Chase 32 is optimized for single sterndrvie engine installation. Excellent sea keeping characteristics and the ability to maintain high speed even in rough seas have had the highest priority during the design process. Chase 32 is a very versatile open walkaround, with the same cabin accommodation as Chase 35



Length 975 cm
Width 255/263 cm
Depth 95 cm
Weight from 2800 kg
Berths 4 (2+2) & Seats 8
Dining 6
Fuel tank 400 l
Deadrise 24.5 degrees
Speed 44-80 knots





CHASE 32 Pro

Chase 32 Pro, designed for outboard power up to Mercury Racing 600hp V12. Optimized for single engine installation. Excellent sea keeping characteristics and the ability to maintain high speed even in rough seas have had the highest priority during the design process. Chase 32 is a very versatile open walkaround, with the same cabin accommodation as Chase 35



Length 975 cm
Width 255/263 cm
Depth 95 cm
Weight from 2800 kg
Berths 4 (2+2) & Seats 8
Dining 6
Fuel tank 400 l
Deadrise 24.5 degrees
Speed 44-80 knots

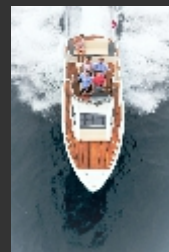




CHASE 35

Chase 35 has received a completely newly developed Mk2 hull and has been extended by a foot. The new construction provides higher efficiency and better stability. The change now also gives the possibility to use Twin 565 hp High performance engines from Mercury Racing.

Length 1068 cm
Width 255/263 cm
Depth 95 cm
Weight from 3000 kg
Berths 4 (2+2) & Seats 10
Dining 6
Fuel tank 400 l
Deadrise 24.5 degrees
Speed 44-80 knots

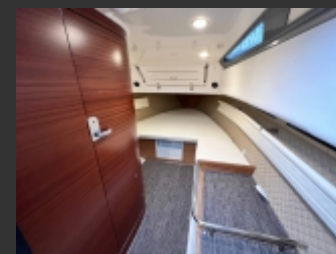




CHASE 35 Pro

Chase 35 Pro, designed for twin outboard engines. Tested and approved for up to twin mercury Racing 450 R motors giving speeds of 78 knots. This boat has received a completely newly developed Mk2 hull. The new construction provides higher efficiency and better stability.

Length 1068 cm
Width 255/263 cm
Depth 95 cm
Weight from 3000 kg
Berths 4 (2+2) & Seats 10
Dining 6
Fuel tank 400 l
Deadrise 24.5 degrees
Speed 44-80 knots





History & Heritage

The Cormate boats have been engineered and developed by Egil Ranvig of Hydro Design AS (established 1985). On water testing of prototypes is done at our service and test center in Fredrikstad (Norway). Hydro Design has over 35 years experience of building boats that had to withstand a combination of rough sea conditions and high speeds. Hydro Design has its origins as one of Europe's leading manufacturers of offshore racing boats, this has contributed to irreplaceable knowledge of hull designs, manufacturing techniques and materials. The heritage and the offshore racing genes live on through today's products. Our founder and CEO Egil Ranvig is widely regarded as the master of offshore performance hull design.

The Cormate production Tools have all been developed by CAD/CAM technology and produced in full scale with CNC milling. Hydro Design was one of the first boat builders in Europe to exploit this technology. The first CAD drawings were conducted in 1993 and the first 3D models were made in 1999. CAD and 3D modeling are used throughout the design process, from the construction and stability test of the hull to the planning of wiring and cabling.

Hydro-Design was founded in 1985 by Egil Ranvig. Together with his friend Tom Martens Meyer, Ranvig developed the enterprise from

producing affordable waterski boats to increasingly sophisticated racing boats. These boats won countless Offshore races, including European and World championship races and they also set world speed records. The racing boats were not only sold to Europe, but also to the USA, UAE and Japan.

From 1989 Hydro Design also began to produce center console boats and established the renowned and highly regarded Hydrolift brand. The first models, F-18 and F-20 are today sought after classics. With ever new models being produced, the company evolved to become a distinct player among recreational boat manufacturers.

Hydro Design continued to produce the original models and new RIB's under the name Stormway. This business was sold fairly quickly and the idea of yet another brand was conceived. Along with Frode Svendsen, his old brother in arms from the Hydrolift era, Ranvig could now realize the dream of a new concept. The goal was to produce high quality boats with excellent seaworthiness and timeless lines, but with a revolutionary layout adapted for today's lifestyle. These boats were entirely constructed by CAD/CAM, without ties to former construction and building techniques - the Cormate boats saw the light of day.





FINE DESIGN
MARINE

Fine Design Marine. Cobbs Quay Marina. Poole Harbour. IMPORTER & DISTRIBUTOR UK & EUROPE
www.finedesign-marine.co.uk boats@finedesign-marine.co.uk office: +44 (0) 1202 465 327 24hours: +44 (0) 7770 777 501

